

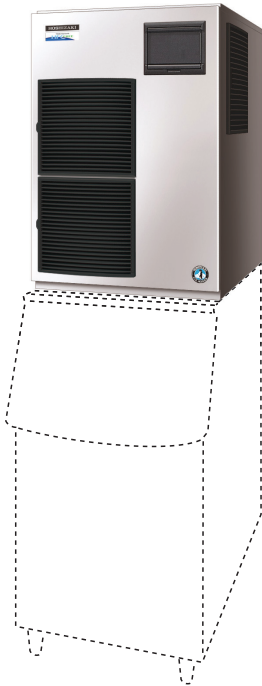


# HOSHIZAKI

## FM-48oAKE-HC (SB) FLAKE ICE MAKER / FM-48oAKE-HC-N (SB) NUGGET ICE MAKER

### Product Description

The FM-48oAKE-HC (-N) is a modular HydroCarbon Ice maker which produces either Flake or Nugget Ice. Flake and Nugget Ice are popular for a variety of cooling purposes, including the display of fish and fresh produce as well as in the medical world for cooling blood and organs. This ice is often used to prepare cocktails and drinks because of the quickness of cooling and limited dilution of drinks.



- Hoshizaki ice makers are micro computer controlled, controlling the ice making process to perform at its best under varying circumstances, without having to make physical adjustments.
- The characteristics of the ice produced by Hoshizaki ice makers means that 'freeze-burn' is no longer an issue when displaying fresh fish or produce.
- Quality stainless steel auger and evaporator increase the life expectancy of these components and the whole ice maker, as well as reducing costly maintenance visits.
- An easily cleanable air filter allows end users to carry out a routine cleaning schedule, extending product life expectancy and reducing the frequency and costs of maintenance call-outs.
- Work at low pressure reduces the stress on the system units.
- 100% HFC free CO<sup>2</sup> foam insulation use contributes to reduction of running costs by maintaining a uniform unit temperature.
- Energy efficiency of ice maker is ensured by the use of extremely low level of the refrigerant R290.

### Available Models

FM-48oAKE-HC (Air cooled)
FM-48oAKE-HC-N (Air cooled)

### Ice

Model	Shape
FM-48oAKE-HC	Flake
FM-48oAKE-HC-N	Nugget



### Bins

Model	Type of Bin	Max. Bin Capacity
B-301SA	Modular	144 kg
B-501SA, TK 8 D		217 kg
B-801SA, TK 8 D + TK 18 D		348 kg

### Production

Model	Ice Production per 24h	Temperature	Water Consumption per 24h
FM-48oAKE-HC	Approx. 450kg	AT.10°C, WT.10°C	Approx. 0,450m <sup>3</sup>
	Approx. 400kg	AT.21°C, WT.15°C	Approx. 0,400m <sup>3</sup>
	Approx. 340kg	AT.32°C, WT.21°C	Approx. 0,340m <sup>3</sup>
FM-48oAKE-HC-N	Approx. 380kg	AT.10°C, WT.10°C	Approx. 0,380m <sup>3</sup>
	Approx. 330kg	AT.21°C, WT.15°C	Approx. 0,330m <sup>3</sup>
	Approx. 270kg	AT.32°C, WT.21°C	Approx. 0,270m <sup>3</sup>

### Two year warranty

For more information visit our website at [www.hoshizaki-europe.com](http://www.hoshizaki-europe.com)  
Hoshizaki Europe B.V. retains the right to change products and their specifications without prior notice.

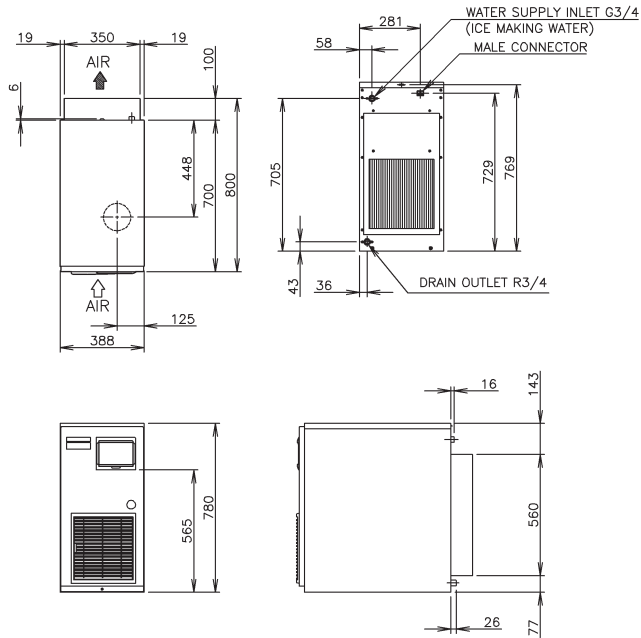




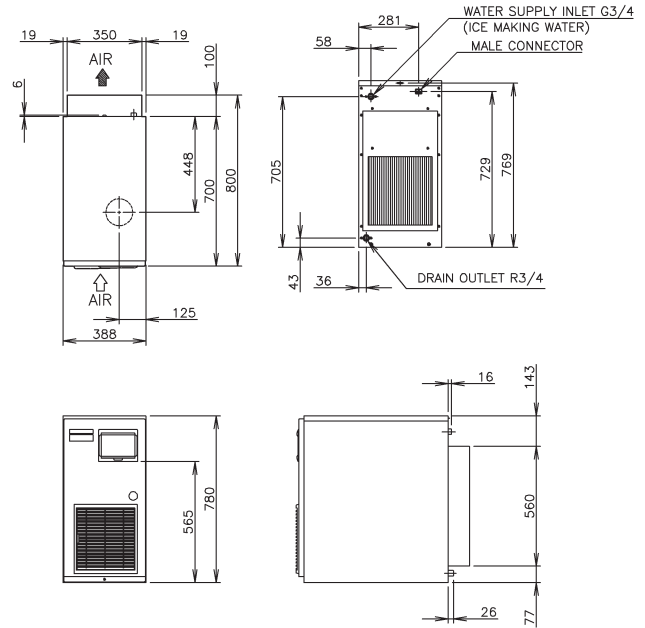
# HOSHIZAKI

## FM-48oAKE-HC (SB) FLAKE ICE MAKER / FM-48oAKE-HC-N (SB) NUGGET ICE MAKER

FM-48oAKE-HC



FM-48oAKE-HC-N



Specification	FM-48oAKE-HC	FM-48oAKE-HC-N
<b>Power Supply</b>	1 Phase 220V-240V 50Hz Capacity: 2.2kVA (8.8A)	1 Phase 220V-240V 50Hz Capacity: 2.2kVA
<b>Amperage</b> (AT:32°C, WT:21°C)	5.3A Starting: 27A	5.6A Starting: 27A
<b>Electric Consumption</b>	1100 W (Power Factor: 89.1 %)	1170W (Power Factor: 90, 7%)
<b>Exterior</b>	Stainless Steel, Galvanized Steel (Rear)	Stainless Steel, Galvanized Steel (Rear)
<b>Connections - Water Supply</b>	Direct Connection to Water Main, Inlet: G3/4 (Rear)	Direct Connection to Water Main, Inlet: G3/4 (Rear)
<b>Connections - Drain</b>	Outlet: R3/ 4 (Rear)	Outlet: R3/ 4 (Rear)
<b>Ice Making System</b>	Thin ice forming inside Cylinder (Flake Ice)	Thin ice forming inside Cylinder (Flake Ice)
<b>Compressor</b>	Hermetic	Hermetic
<b>Condenser</b>	Spiral Tube Type, Air-cooled	Spiral Tube Type, Air-cooled
<b>Heat Rejection</b> (AT:32°C, WT:21°C)	2190W	2190W
<b>Evaporator</b>	Tube coiled around Cylinder (Solder Plated)	Tube coiled around Cylinder (Solder Plated)
<b>Refrigerant</b>	R290	R290
<b>Ice Making Water Control</b>	Float Switch and Solenoid Valve	Float Switch and Solenoid Valve
<b>Electrical Circuit Protection</b>	Circuit Breaker, Earth Wire	Circuit Breaker, Earth Wire
<b>Refrigerant Circuit Protector</b>	Compressor Internal Thermostat (Auto-reset), Pressure Switch (Auto-reset)	Compressor Internal Thermostat (Auto-reset), Pressure Switch (Auto-reset)
<b>Mechanism Protection</b>	Micro Switch (Manual-reset)	Micro Switch (Manual-reset)
<b>Interlock</b>	Shutdown by Microprocessor (Manual - reset)	Shutdown by Microprocessor (Manual - reset)
<b>Dimensions Product excl. Packaging</b>	560 x 700 x 780 (W x D x H, mm)	560 x 700 x 780 (W x D x H, mm)
<b>Dimensions Product incl. Packaging</b>	665 x 820 x 950 (W x D x H, mm)	665 x 820 x 950 (W x D x H, mm)
<b>Weight Gross / Net</b>	99kg / 92kg	99kg / 92kg

### Operation Conditions

<b>Ambient Temperature</b>	5 - 40°C
<b>Water Supply Temperature</b>	5 - 35°C
<b>Water Supply Pressure</b>	0,05-0,8MPa (0,5-8bar)
<b>Voltage Range</b>	Rated Voltage ±6%

### Accessories

Mounting Bracket
Installation Kit

For more information please contact your local sales office:

Hoshizaki Belgium:  
Hoshizaki Deutschland:  
Hoshizaki France:  
Hoshizaki Iberia:  
Hoshizaki Middle East:

info@hoshizaki.be  
info@hoshizaki.de  
info@hoshizaki.fr  
info@hoshizaki.es  
sales@hoshizaki.ae

Hoshizaki Nederland:  
Hoshizaki United Kingdom:  
Other countries:

sales@hoshizaki.nl  
uksales@hoshizaki.co.uk  
sales@hoshizaki.nl

[www.hoshizaki-europe.com](http://www.hoshizaki-europe.com)